






## 12 Steel Drive Mudgee NSW

4  2  2 

Cleverly designed and ideally positioned in a highly sought after South Mudgee location, this near new four bedroom home offers a perfect blend of quality, style, and sophistication. Showcasing a thoughtful layout and premium finishes throughout, it presents an exceptional opportunity to enjoy modern luxury living in one of the region's most desirable settings

- Four generously sized bedrooms with built-in robes
- Spacious master bedroom with walk-in robe and large ensuite
- Enjoy cooking in a well-appointed kitchen featuring SMEG appliances, soft-close cabinetry and ample storage
- Formal lounge room offering space for the entire family
- Seamless floor plan with open plan living and dining flowing effortlessly to a covered outdoor alfresco
- Year-round comfort with ducted heating and cooling throughout plus 11KWT system helping with electricity bills
- Double lock-up garage with internal and electric access
- Near new home with remaining new home warranty
- Situated on a level 2,522sqm of landscaped & irrigated

**Type** : House  
**Price** : \$1,095,000  
**Land Size** : 2522 sqm  
**View** : <https://www.thepropertyshop.com.au/sale/nsw/dubbo-orana/mudgee/residential/house/8651510>



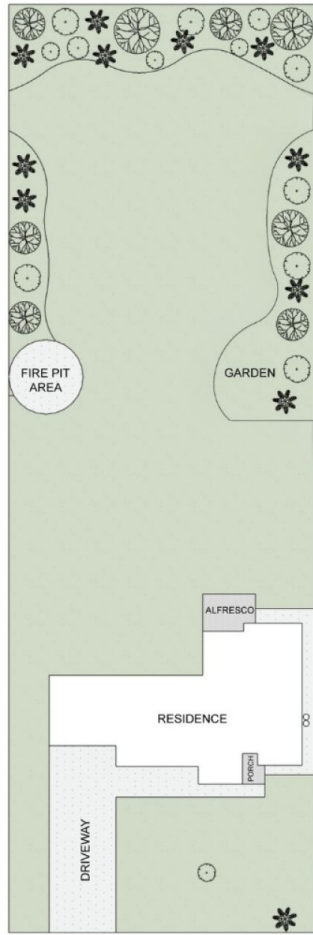
**Alyse Withers**  
02 6372 2222



**Jamie Spargo**  
02 6372 2222

[For full version visit the website](https://www.thepropertyshop.com.au)

<https://www.thepropertyshop.com.au>



SITE PLAN



GROUND FLOOR



12 Steel Dr, Spring Flat



LAND SIZE: 2522 m2  
HOUSE SIZE: 248 m2



**DISCLAIMER:** FLOOR PLANS AND SITE PLANS ARE FOR ILLUSTRATIVE PURPOSES ONLY. ALL DIMENSIONS ARE APPROXIMATE AND IT DOES NOT CONSTITUTE PART OF ANY LEGAL DOCUMENTS.