



2222 Bylong Valley Way Rylstone NSW

5 4 2

A magnificent offering of an established vineyard on the outskirts of Rylstone, continue the cellar door/bed and breakfast operation with lucrative returns or enjoy the tranquillity of 5.47ha and luxurious home enjoying breathtaking views across the valley.

- Located on the popular tourist drive of Bylong Valley Way, between Rylstone and Kandos, this position will ensure maximum exposure for any business operation if you so choose. It's also only an easy 2.5hrs from Greater Sydney
- Luxurious 5 bedroom farm house showcasing raked ceilings and polished concrete floors
- Three en-suite bathrooms provide amenities perfect for short stay accommodation and there are an additional three toilets
- Current cellar door operations, home to Naked Lady Wines for the past 11 years, have been remarkably successful to say the least, continue this offering (generous owners will provide a full hand over) or there are a variety of other uses you may prefer
- 5.47ha or 13.5 acres offering elevated views of the valley and beyond. Four internal paddocks allowing for stock to graze whilst you pick the fruits from the orchard

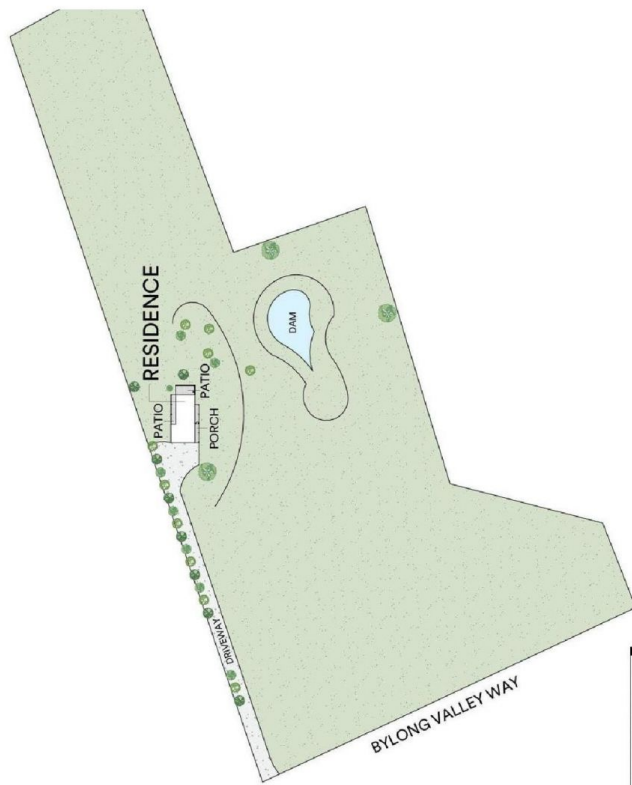
Price : OFFERS OVER \$1,695,000
Land Size : 5.47 ha
View : <https://www.thepropertyshop.com.au/sale/nsw/central-west/rylstone/residential/acreage/semirural/7915863>



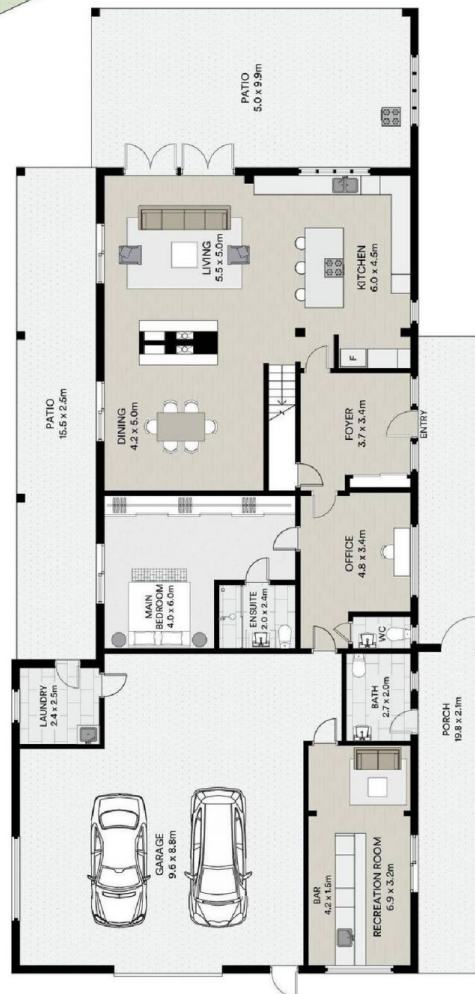
Sara Perry
02 6372 2222



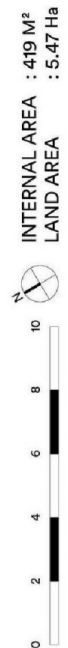
Olivia Dwyer
02 6372 2222



FIRST FLOOR



GROUND FLOOR



2222 BYLONG VALLEY WAY - RYLSTONE

