



the property shop



190 Mayne Street Gulgong NSW

4 🛏 1 🚿 4 🚗

Located just 600 meters from the CBD and offering direct access to a picturesque golf course, this charming residence is brimming with allure. Gulgong, a historic village, has emerged as a sought-after residential destination, offering a convenient 20-minute commute to Mudgee.

Price : \$ 650,000
Land Size : 1011 sqm
View : <https://www.thepropertyshop.com.au/sale/nsw/central-west/gulgong/residential/house/7889211>

Features include:

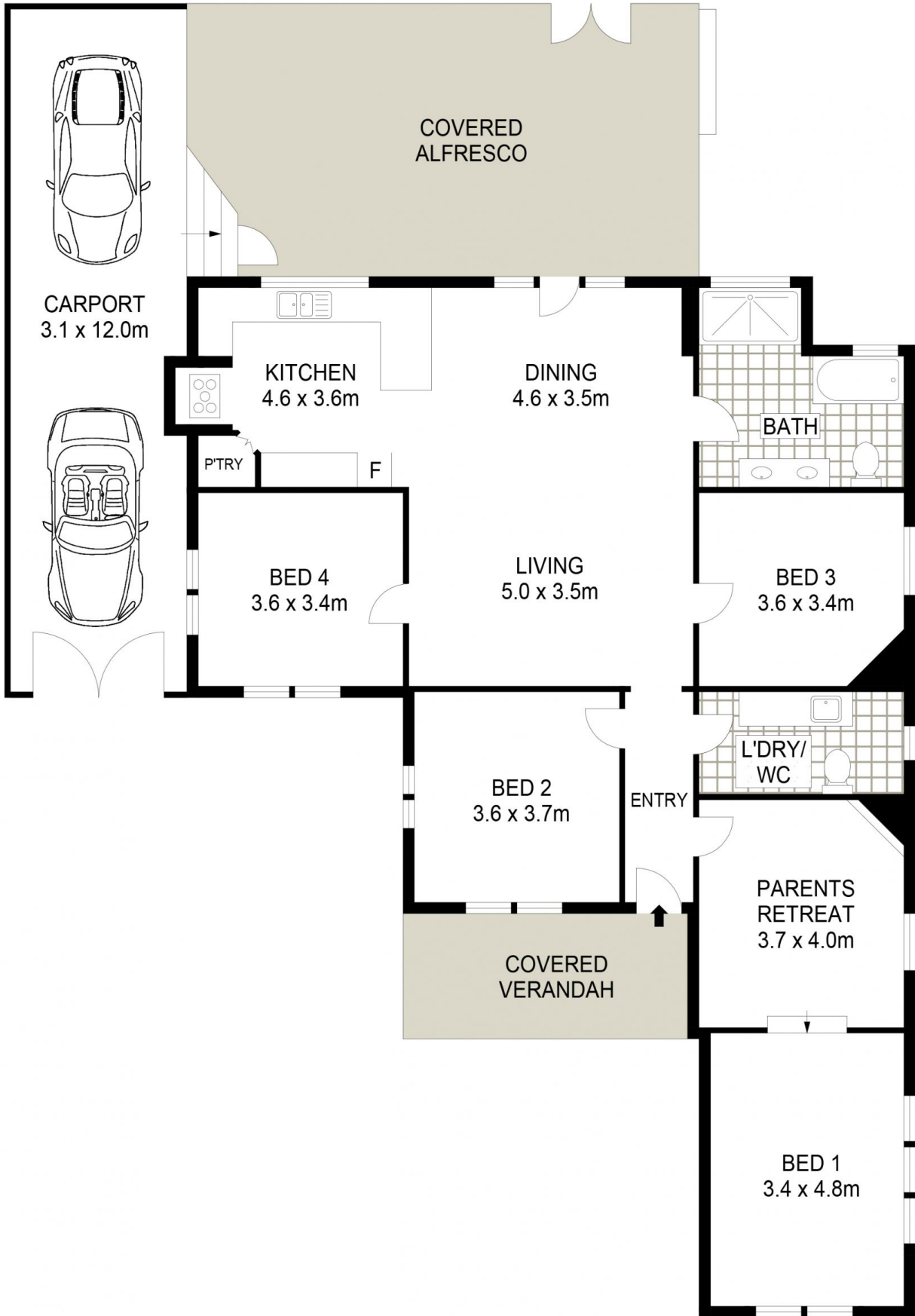
- An open-plan living and dining area featuring reverse cycle air conditioning and a wood fire.
- A modern kitchen equipped with a 900mm freestanding electric oven/gas stove, dishwasher, and a spacious pantry.
- A generously sized master bedroom with an adjoining parents' retreat or home office and reverse cycle air conditioning.
- Three additional well sized bedrooms
- A renovated bathroom boasting a double shower and double vanity.
- A well-appointed laundry with a second toilet and built-in cabinetry.
- An expansive rear deck complemented by an additional spacious freestanding entertaining area.



Sara Perry
02 6372 2222



Olivia Dwyer
02 6372 2222



190 MAYNE STREET

GULGONG



Floor plans and rooms sizes are indicative only