



1232 Henry Lawson Drive Mudgee NSW

4 🏠 3 🚗 4 🚗

This extraordinary property presents a unique opportunity to secure an enchanting country cottage, conveniently located just a brief 15-minute drive from the bustling heart of Mudgee's central business district. Set against the picturesque panorama of Mudgee's undulating hills, this property spans approximately 10.12 hectares of land. A perfect sanctuary for those seeking an exclusive haven in a serene paradise.

Type : Rural
Price : \$ 855,000
Land Size : 10.12 ha
View : <https://www.thepropertyshop.com.au/sale/nsw/dubbo-orana/mudgee/residential/rural/7875005>

- Master wing with walk in robe and en-suite plus personal lounge area
- Additional three bedrooms all with built in robes
- Open plan living and kitchen area filled with natural light
- Large, covered alfresco area well suited to the perfect entertainer
- Utility room provided for with separate W/C and shower plus personal sauna room
- Climate control is catered for with ducted reverse air-conditioning and woodfire heating
- Equipped bore with loads of fresh rainwater storage
- Double lock up shed with additional one bay machinery

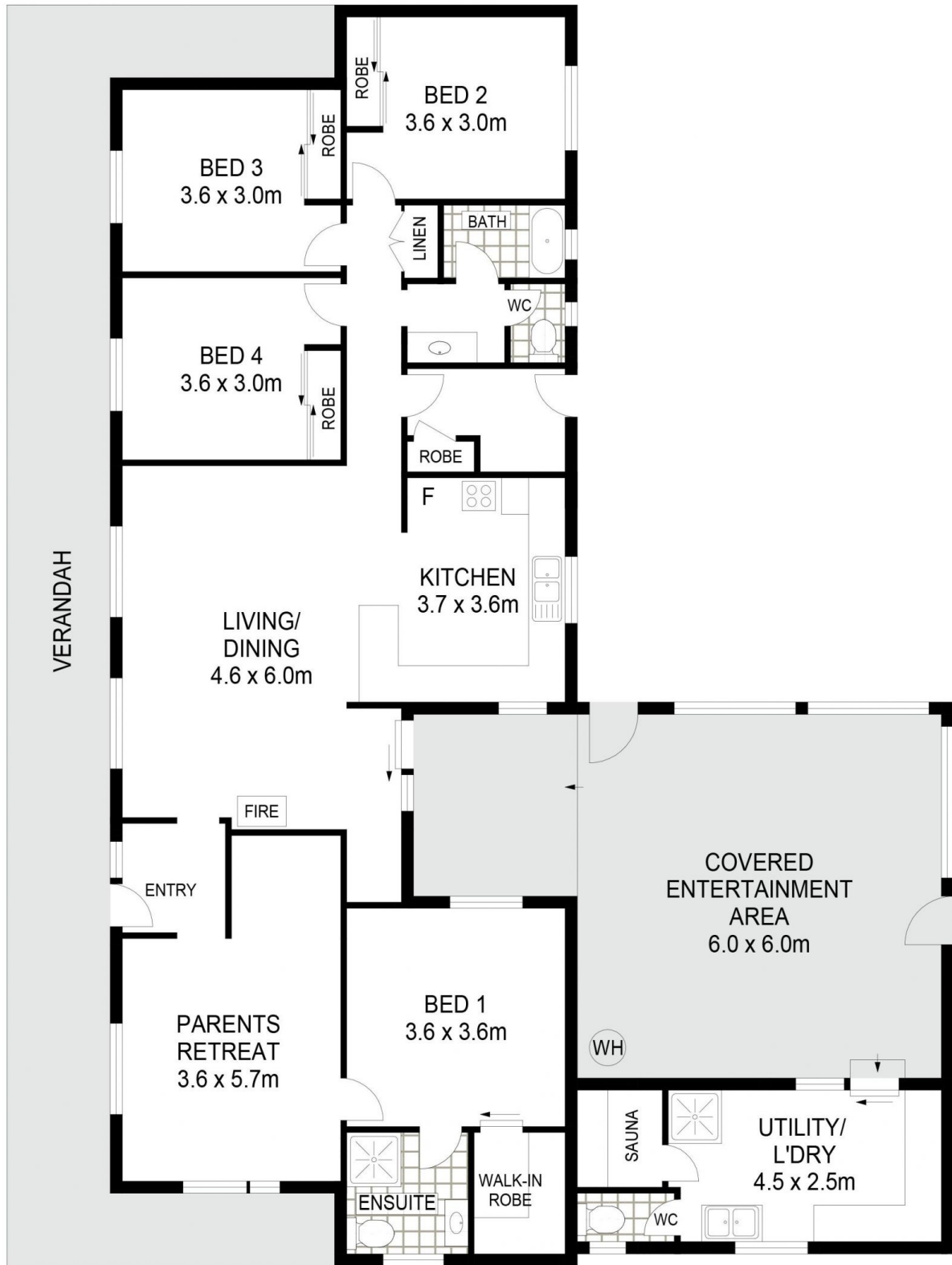
[For full version visit the website](https://www.thepropertyshop.com.au)



David Goldring
02 6372 2222



Alyse Withers
02 6372 2222



1232 HENRY LAWSON DRIVE

ST FILLANS



Floor plans and rooms sizes are indicative only

