



1216 Lue Road Mudgee NSW

6 🏠 2 🚗 4 🚗

Set high on a hillside and capturing magnificent views of the surrounding countryside 'The Spine' is a remarkable property just 12 minutes East of Mudgee.

Land Size : 180 ha

View : <https://www.thepropertyshop.com.au/sale/nsw/dubbo-orana/mudgee/residential/rural/7723367>

Robust and imposing in its design, there is a perfect blend of raw, industrial, reclaimed and eclectic elements which combine to create a truly unique abode.

- A beautifully rugged 180.2ha property (445 acres approx.) predominantly native timber; a haven for birds and wildlife
- Enormous open plan living space with soaring raked ceilings and an abundance of natural light
- Californian redwood kitchen with gorgeous island bench from Mudgee's earliest pharmacy, circa 1855. Walk in pantry offers enough storage for the entire household
- Meals area adjacent to the kitchen; separate TV room or seventh bedroom
- Second level living space with outstanding views plus two sitting areas
- Ample insulation, ceiling fans throughout, custom built slow combustion fire
- Huge man cave/workshop off the living area could be additional accommodation or living space



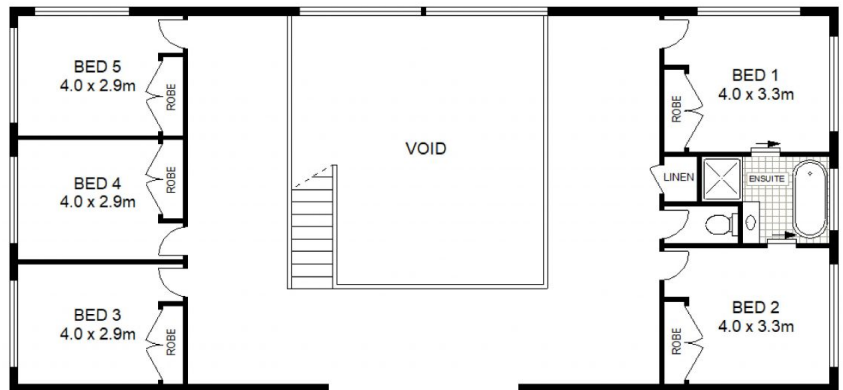
Sara Perry
02 6372 2222



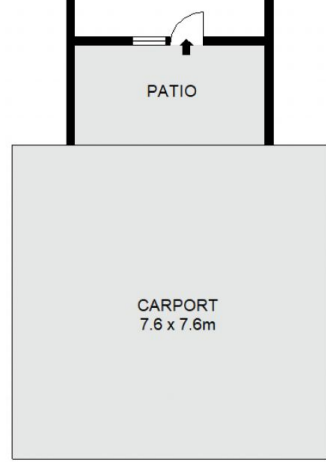
Andrew Palmer
02 6372 2222



GROUND LEVEL



ENTRY LEVEL



1216 LUE ROAD

Mt KNOWLES



Floor plans and rooms sizes are indicative only

