

MUDGEE CBD



47 Robert Hoddle Grove Mudgee NSW

3 1 4

Nestled in arguably one of Mudgee's most tightly held addresses, we are delighted to offer you your LAST chance to build in one of Mudgee's most prestigious streets. Surrounded by superior homes and conveniently situated on Mudgee's Northern edge of town with picturesque views and farmland at rear, do not miss your chance to build your dream home

Land Size : 4722 sqm
View : <https://www.thepropertyshop.com.au/sale/nsw/dubbo-orana/mudgee/residential/land/7668179>

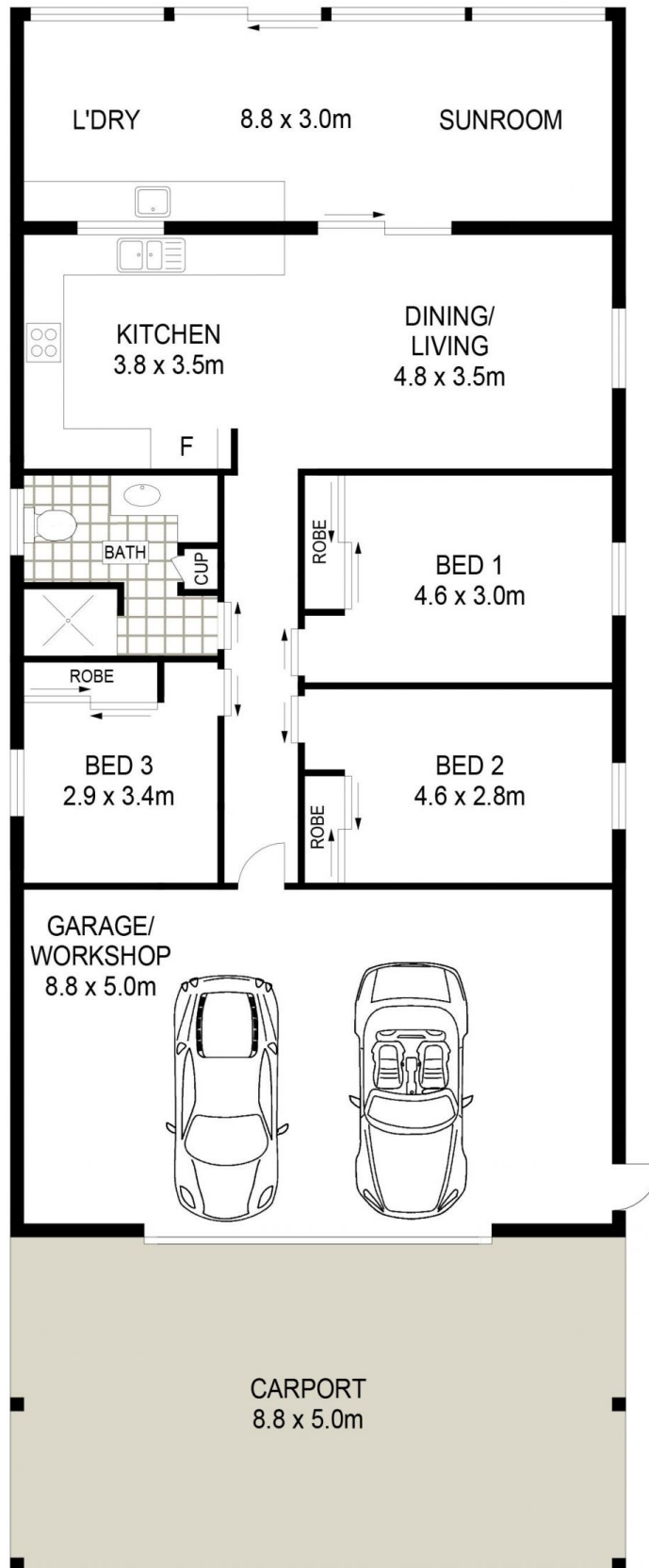
- Modern 3-bedroom granny flat offering a comfortable residence during the building process
- Granny flat features a modern bathroom, kitchen, and north-facing sunroom
- Sprawling 4722 sqm block with plenty of space to build a large home, create landscaped gardens and add a pool or outdoor entertaining area for family and friends to enjoy.
- Ready to build with services connected
- Current D.A approved house plans (can be supplied upon request)
- Amazing views of Mudgee and surrounding hills with farmland at rear
- Tightly held family friendly address
- Additional storage space with expanded shed off granny flat



Alyse Pilley
02 6372 2222



Annie Christensen
02 6372 2222



GROUND LEVEL

47 ROBERT HODDLE

GROVE BOMBIRA



Floor plans and rooms sizes are indicative only