



155 Bruce Road Mudgee NSW

5 2 4

Stunning, expansive executive family home, designed by a family for family living. Situated on over 5526m² of easy care grounds this exceptional residence is the perfect contemporary home for modern family life.

- Room for everyone with four large bedrooms, full-sized office and separate studio
 - Congregate or separate in multiple living spaces throughout the home
 - Drift seamlessly between indoor and outdoor living spaces
 - Cook for 2 or 20 in the well appointed kitchen
 - Loads of storage throughout
 - Relax or entertain all year round in the large central covered alfresco area
 - Oversized garage/workshop with additional 12 x 6M shed-power connected
 - Potential for subdivision down to 2000sqm *STCA
 - Peaceful rural fringe location in South Mudgee
- *Subjected to council approval

An exceptional home offering space, privacy and comfort for the entire family. For more details or to arrange an

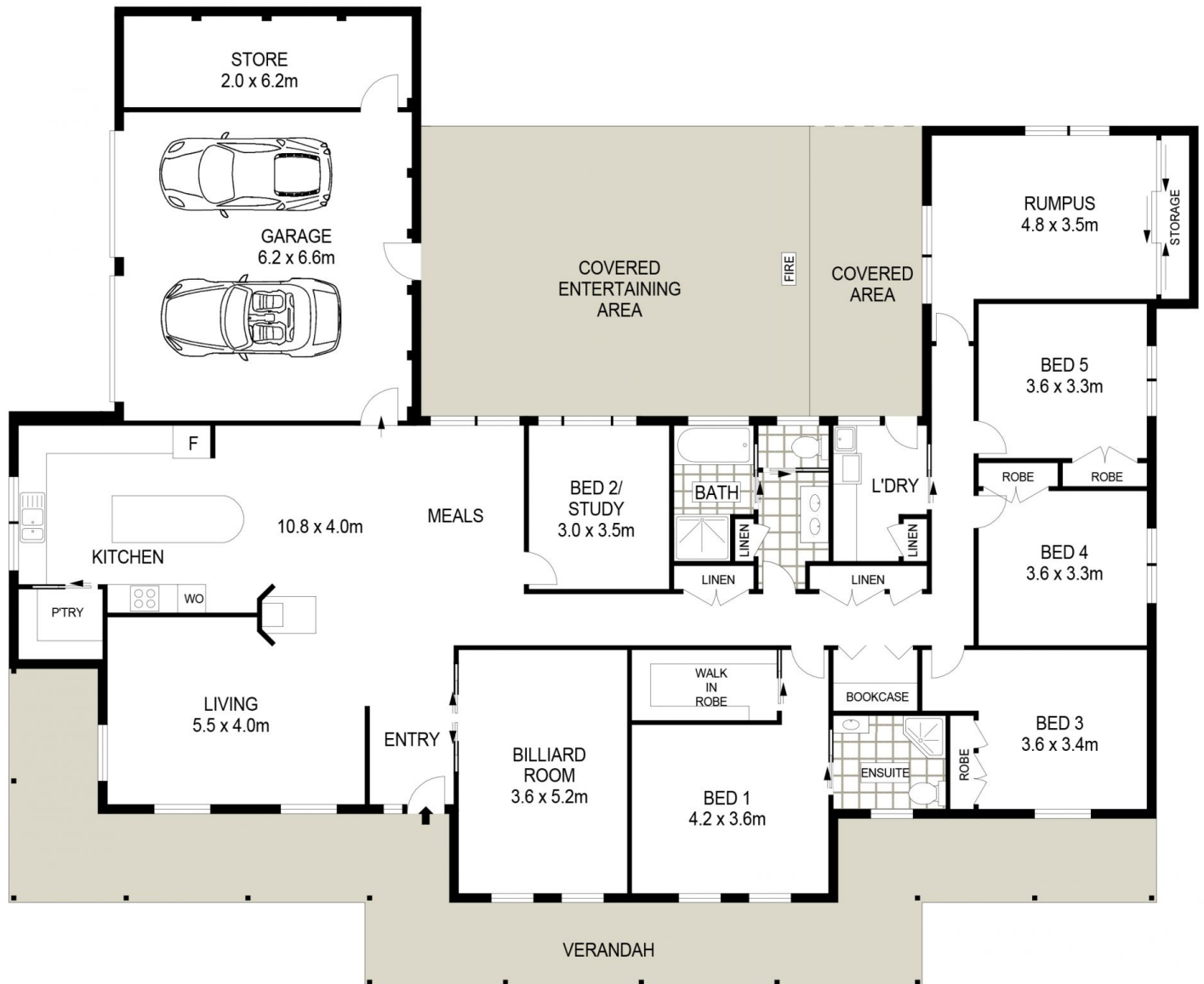
Price : GUIDE \$1,395,000
Land Size : 5526 sqm
View : <https://www.thepropertyshop.com.au/sale/nsw/dubbo-orana/mudgee/residential/house/7587936>



Alyse Pilley
02 6372 2222



Annie Christensen
02 6372 2222



155 BRUCE ROAD

MUDGEE

0 1 2 3 4 5
SCALE (METRES)



Floor plans and rooms sizes are indicative only