



492 Upper Turon Road Mudgee NSW

6 4 2

Panoramic valley views, spacious residence and only 2.5hrs approx. from Sydney, 10 minutes from Capertee and an hour from Mudgee on the Sydney side.

Nestled on 2.75HA (6 acres), and apart of "Turon Country Retreats", every aspect of this property has been carefully planned and executed - resulting in an inviting, easy-living country getaway with some very impressive attributes.

- Incredible eco-friendly 6 bedroom, 4 bathroom residence
- Main bedroom with raised bed platform enjoying beautiful rural views
- Extra large ensuite with feature round bath and shower
- Three separate living areas with additional kids attic space
- Open planned living and dining flowing effortlessly to alfresco balcony
- Huge entertaining area with front verandah over looking stunning rolling hills with magical views over the valley
- Climate control catered for with multiple A/C systems, two woodfire systems and ceiling fans throughout
- Access to community land consisting of 1400ha or 3,458 acres approx.

Price : \$ 974,000

Land Size : 2 ha

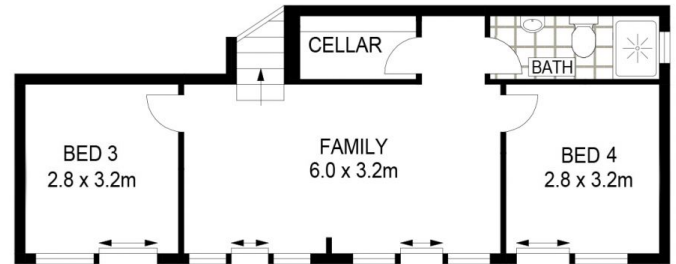
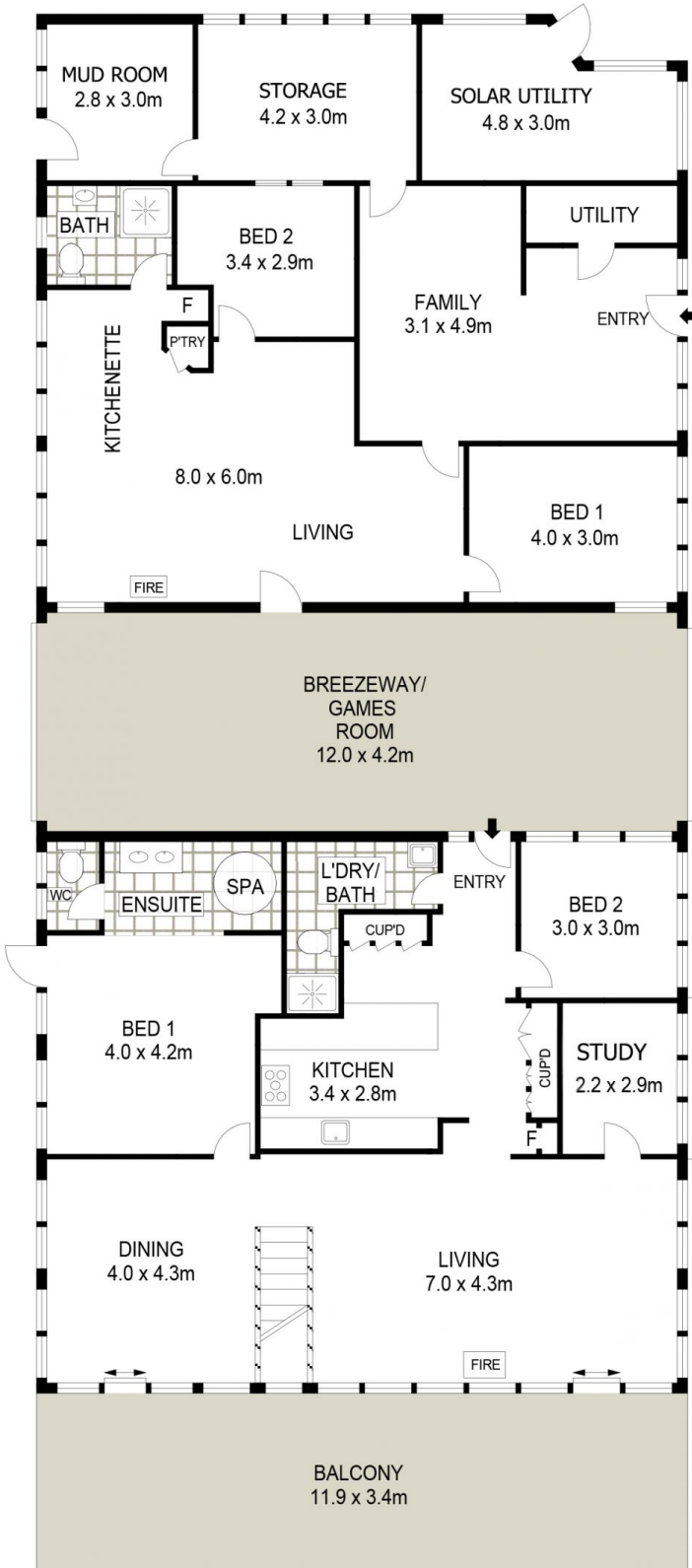
View : <https://www.thepropertyshop.com.au/sale/nsw/dubbo-orana/mudgee/residential/rural/7081225>



David Goldring
02 6372 2222



Ashley Olsen
02 6372 2222



492 UPPER TURON ROAD

CAPERTEE



Floor plans and rooms sizes are indicative only

