

MUDGEE CBD



42 Suttor Avenue Mudgee NSW

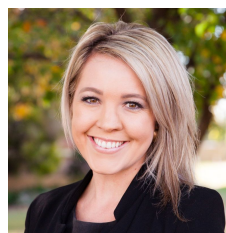
Offering an extremely rare, large level residential building block in the highly sought after Caerleon Estate, this block presents a unique opportunity to start your dream build today

- 956sqm (approx.) of vacant registered land
- Services connected ready for your plans to commence
- Large level north to south facing block
- Pleasant surrounds with elevated views of Mudgee's rolling hills
- Surrounded by brand new homes
- Family friendly estate with nearby Park & town convenience close by

With residential land scarce, this vacant block of land won't last long, don't miss this fantastic opportunity to build or invest today!

For further details contact Alyse Pilley on 0421 648 155 or Jennaya Cook on 0412 232 576 at The Property Shop

Price : GUIDE \$300,000 - \$320,000
Land Size : 956 sqm
View : <https://www.thepropertyshop.com.au/sale/nsw/dubbo-orana/mudgee/residential/land/7058372>



Alyse Pilley
02 6372 2222



Jennaya Cook
02 6372 2222