



748 Cope Road Gulgong NSW

4 2 6

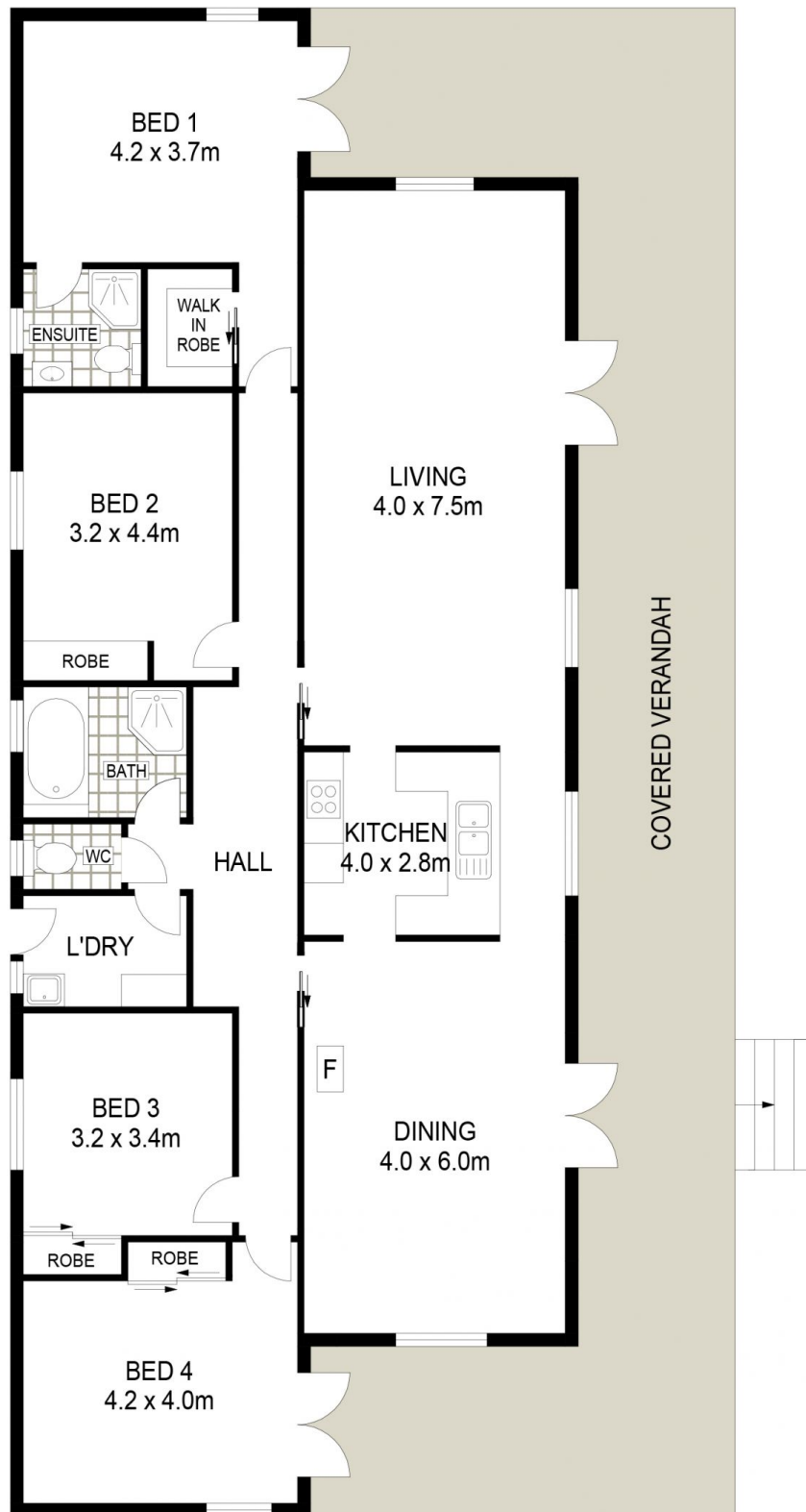
This one-of-a-kind family home boasts space for the entire family, having an abundance of water, stunning northerly views, and exceptional shedding. Perfectly positioned on 6.44HA (approx. 16acres) just 7.5km from Gulgong & a short drive to the mining precinct, with tar road frontage and school bus pickup this lifestyle property will suit the entire family!

- Four oversized bedrooms with built in robes & ceiling fans
- Master bedroom featuring walk in robe, ensuite and French doors to covered deck
- Open plan and sun-drenched living & dining area surrounded by wrap around verandah
- Well-appointed kitchen having dishwasher, ample storage & breakfast bar
- Spacious family bathroom with separate W/C
- Stay comfortable year-round with combustion wood fire, reverse cycle air conditioning & ceiling fans
- Established irrigated gardens, fenced house yard and approx. 16acres of grazing country
- Water is plentiful with creek frontage, large dam, equipped bore and approx. 60,000ltrs freshwater storage
- Substantial 30x7.5m shed with power connection,

Price : \$ 810,000
Land Size : 6.44 ha
View : <https://www.thepropertyshop.com.au/sale/nsw/central-west/gulgong/residential/acreage/semirural/7033531>



Alyse Pilley
02 6372 2222



GROUND LEVEL

748 COPE ROAD

STUBBO



Floor plans and rooms sizes are indicative only