



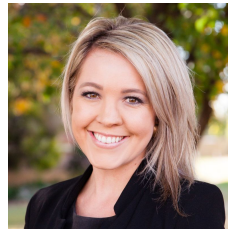
2 Steel Drive Mudgee NSW

4 🚗 2 🚗 2 🚗

Offering a new four-bedroom home with modern interiors & a functional floor plan, established on a large level 2040sqm block in the highly desired 'Broad view Estate' with views of Mudgee's rolling hills while only a short walk to the new and upcoming St. Matthews Catholic School, offering a fantastic education facility.

Price : \$ 950,000
Land Size : 2040 sqm
View : <https://www.thepropertyshop.com.au/sale/nsw/dubbo-orana/mudgee/residential/house/6791098>

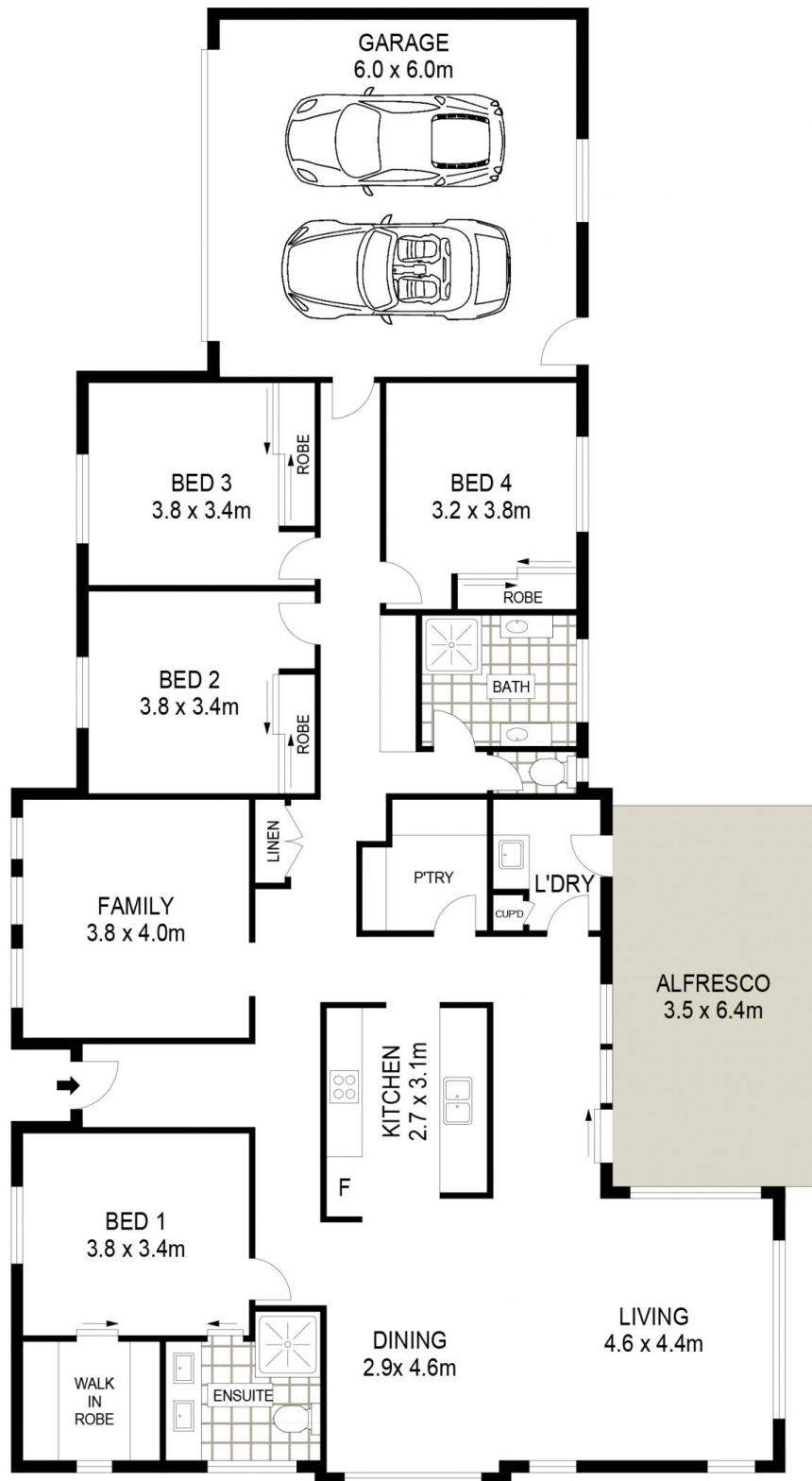
- Four generously sized bedrooms all with built in wardrobes.
- Master bedroom with ensuite, walk in wardrobe
- Modern kitchen with walk in pantry, overlooking the large open plan family dining room
- Separate formal living/ media room perfect for the entire family to relax and put their feet up
- Spacious main bathroom with separate toilet
- Climate control is well catered for with Ducted heating & cooling
- Electric remote control double garage with internal access
- Situated on a large fully fenced block of 2040sqm with side access this property has the potential for your dream pool or shed build whilst boasting new home warranties
- Stunning views towards Mudgee's famous Mount Frome
- Currently tenanted at \$750 per week to a quality tenant -



Alyse Pilley
02 6372 2222



Jennaya Cook
02 6372 2222



GROUND LEVEL

2 STEEL DRIVE

SPRING FLAT



Floor plans and rooms sizes are indicative only