



**1179 Castlereagh Highway Mudgee NSW**

3 🏠 1 🏡 4 🚗

'Martins Hill Vineyard' a stunning rural haven perfectly positioned just 12km from Mudgee on the banks of the Cudgegong River. The ideal rural escape offering convenience and relaxation.

Tucked behind a hill overlooking the Cudgegong River a magnificent hand-crafted sandstone and milled river rock homestead takes full advantage of stunning views over the Cudgegong Valley.

Steeped in local history, Martins Hill is the quintessential country house on the hill with the river running by and rolling vine covered hills. A piece of Tuscany on the Cudgegong.

The Home:

- Magnificent hand crafted sandstone and milled river rock home
- Stunning open plan kitchen dining and living room with 10ft ceilings
- Kitchen island bench, fuel and conventional stove and walk-in butlers pantry

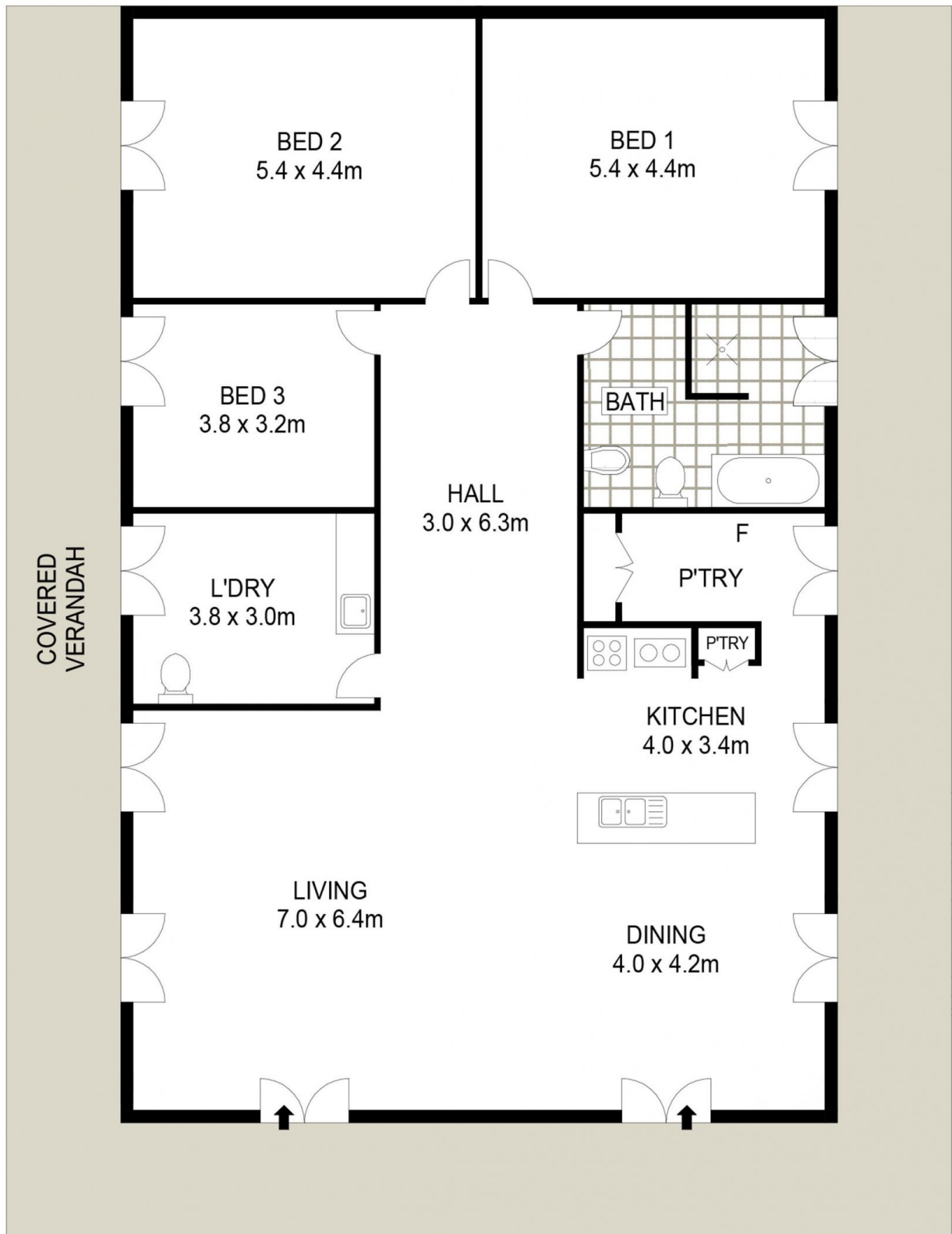
**Land Size** : 7.82 ha  
**View** : <https://www.thepropertyshop.com.au/sale/nsw/dubbo-orana/mudgee/residential/rural/5857351>



**Andrew Palmer**  
02 6372 2222



**David Goldring**  
02 6372 2222

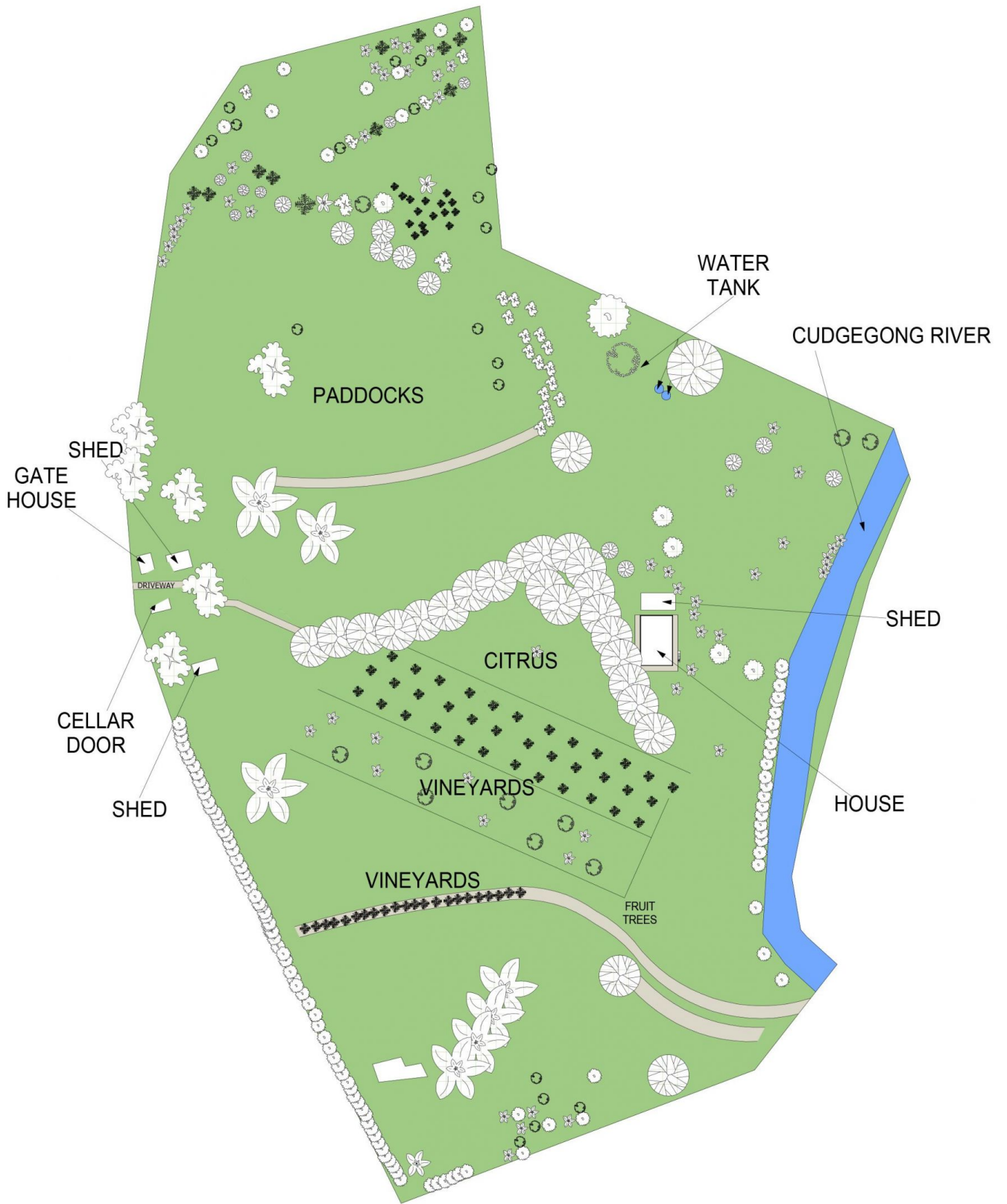


1179 CASTLEREAGH HIGHWAY

MUDGEES



Floor plans and rooms sizes are indicative only



SITE PLAN ( NOT TO SCALE)

1179 CASTLEREAGH HIGHWAY

MUDGEE



Floor plans and rooms sizes are indicative only