



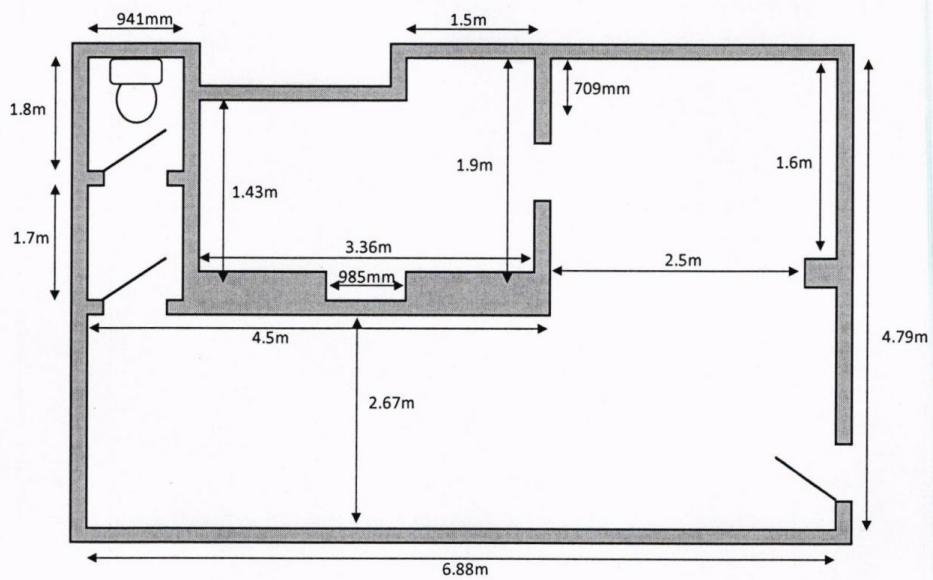
10B BYRON Place Mudgee NSW

APPROXIMATELY 32m2 OF COMMERCIAL/RETAIL SPACE IN THE CBD. HIGH TRAFFIC FLOW. NOW AVAILABLE.

Building Size : 32 sqm
View : <https://www.thepropertyshop.com.au/lease/nsw/dubbo-orana/mudgee/commercial/retail/5659899>



June Lewis
02 6372 2222



10B Byron Place