



11 Swords Court Mudgee NSW

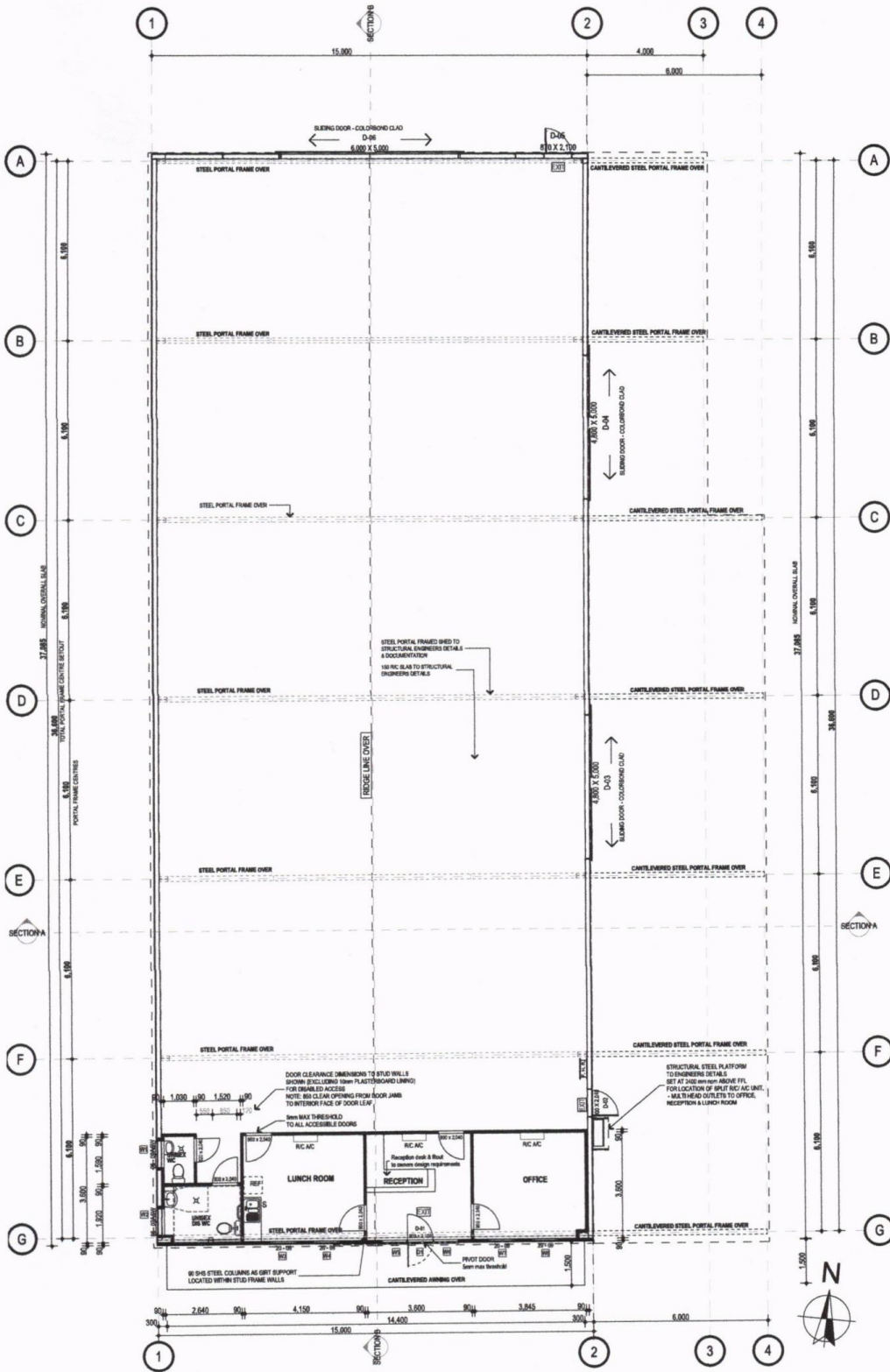
Excellent opportunity to lease a new industrial unit exceeding 550 m² including offices, lunchroom, workshop with overhead crane and amenities PLUS a further undercover area of approximately 200 m² opening onto a large yard.

Easy access to yard and building.

Building Size : 550 sqm
Land Size : 2414 sqm
View : <https://www.thepropertyshop.com.au/lease/nsw/dubbo-orana/mudgee/commercial/industrial/5659800>



June Lewis
02 6372 2222



AREA OF DEVELOPMENT	
STORAGE SHED (Excl Awning)	A: 499.51 m ²
OFFICE & AMENITIES	A: 56.71 m ²
TOTAL BUILDING AREA	A: 556.22 m²
AWNING - EAST	A: 196.06 m ²
AWNING - FRONT (SOUTH)	A: 21.74 m ²

WINDOW SCHEDULE	
PLAN No.	WGL1, WGL2, WGL3, WGL4, WGL5, WGL6, WGL7, WGL8
GLASS	WGL1: SINGLE CLEAR GLASS WGL2: SINGLE CLEAR GLASS WGL3: SINGLE CLEAR LAMINATED GLAZING WGL4: SINGLE CLEAR LAMINATED GLAZING WGL5: SINGLE CLEAR LAMINATED GLAZING WGL6: SINGLE CLEAR LAMINATED GLAZING WGL7: SINGLE CLEAR LAMINATED GLAZING WGL8: SINGLE CLEAR LAMINATED GLAZING
FRAME	WGL1: ALUM. FRAMED - SLIDING WGL2: ALUM. FRAMED - SLIDING WGL3: ALUM. FRAMED - FIXED WGL4: ALUM. FRAMED - FIXED WGL5: ALUM. FRAMED - FIXED WGL6: ALUM. FRAMED - FIXED WGL7: ALUM. FRAMED - FIXED WGL8: ALUM. FRAMED - FIXED

DOOR SCHEDULE	
PLAN No.	D1, D2, D3, D4, D5, D6, D7, D8
FRAME	D1: ALUMINUM COMMERCIAL GRAB FRAME D2: STEEL FRAME & STEEL GLAZ DOOR D3: STEEL FRAME & STEEL GLAZ DOOR D4: STEEL FRAME & STEEL GLAZ DOOR D5: STEEL FRAME & STEEL GLAZ DOOR D6: STEEL FRAME & STEEL GLAZ DOOR D7: STEEL FRAME & STEEL GLAZ DOOR D8: STEEL FRAME & STEEL GLAZ DOOR
GLASS	D1: SINGLE CLEAR D2: LAMINATED GLAZ D3: LAMINATED GLAZ D4: LAMINATED GLAZ D5: LAMINATED GLAZ D6: LAMINATED GLAZ D7: LAMINATED GLAZ D8: LAMINATED GLAZ

NOTE: REFER TO SUMMARY OF SECTION J FOR ALL GLAZING COMPLIANCE REQUIREMENTS

EXIT ILLUMINATED EXIT SIGN

FLOOR PLAN
1:100

DRAWING TO SCALE ON A2 SIZE SHEET ONLY

BUILDING CLASSIFICATION:	CLASS 5 & 8	CLIENT:	S A CARR & CO PTY LTD
PROJECT:	INDUSTRIAL DEVELOPMENT	SITE ADDRESS:	11 SWORDS COURT MUDGE
SHEET DESCRIPTION:	FLOOR PLAN	DATE:	18.4.19
ISSUE:	DATE	DESCRIPTION:	
B	18.4.19	PRELIMINARY SKETCH PLAN	

Preferred Design & Drafting
30 Lewis Street
Mudgee NSW 2850
ph: 0263724397 Mob: 0429600160
email: marian@preferred-design.com.au

SITE AREA:	354 sq m		
D.P. NUMBER:	107716		
DATE:	18.4.19	DRAWING No:	2
DRAWN:	M. Palmer	PROJECT No:	106.19
SCALE:	1:100, 1:200, 1:500		