



42 Louee Street Rylstone NSW

2 1 1

Welcome to Rylstone, only 3.5 hours from Sydney in the Mudgee wine region. Here is an opportunity to 'bank' in on the ever increasing tourism industry for this area and the opportunities for this property really are endless!

- Huge 1660sqm (approx) block in the main street of busy Rylstone, opportunity overload with plenty of exposure
- Two separate office spaces within the building, both air-conditioned. One space is currently rented at \$220 per week
- Large lounge/dining area with wood fire and air-conditioner
- Functional kitchen
- Two toilets
- Large 6x3m garden shed

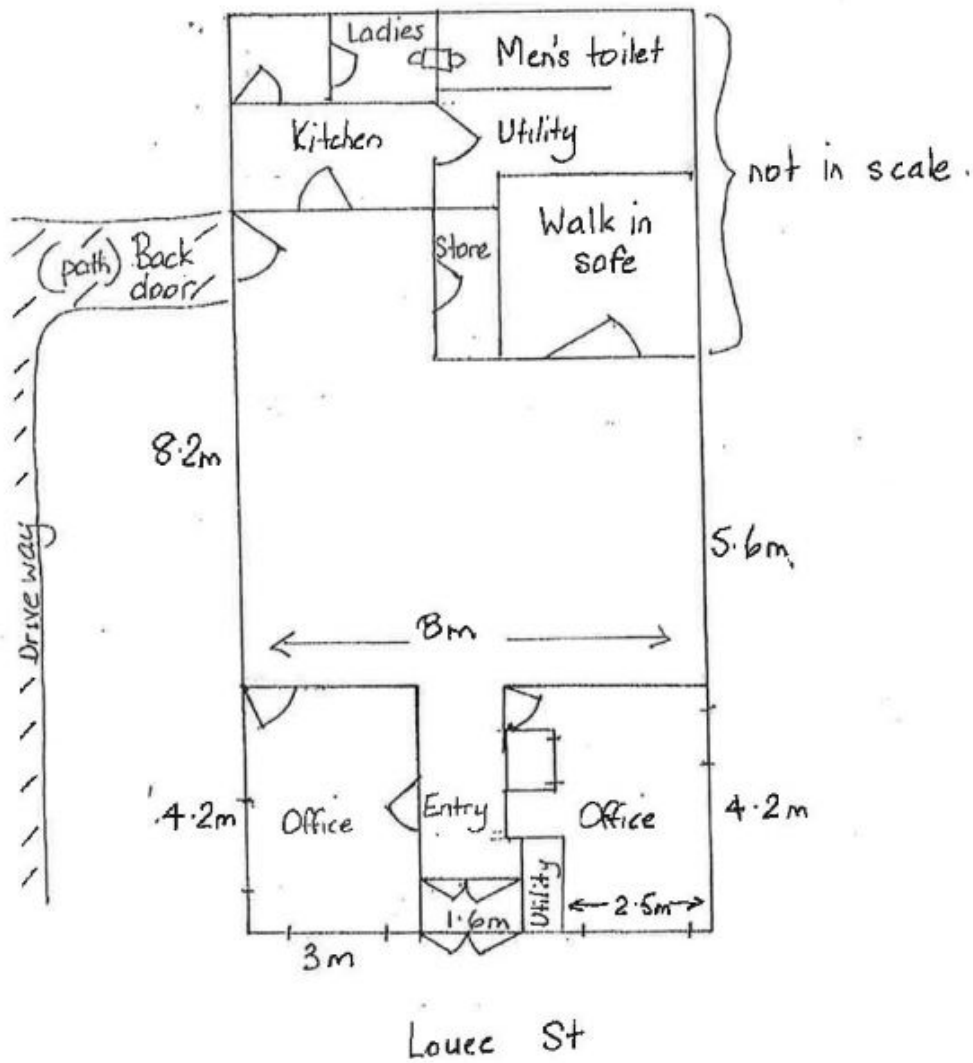
Previously a Bank building with the vault and safe door still in place, now currently used as office space and accommodation, continue to rent out and capitalize on the return or transform, so many possibilities!

Price : \$ 385,000
Land Size : 1660 sqm
View : <https://www.thepropertyshop.com.au/sale/nsw/central-west/rylstone/residential/house/5659372>



Sara Perry
02 6372 2222

MUD MAP OF 42 LOUEE ST



[Handwritten signature]