



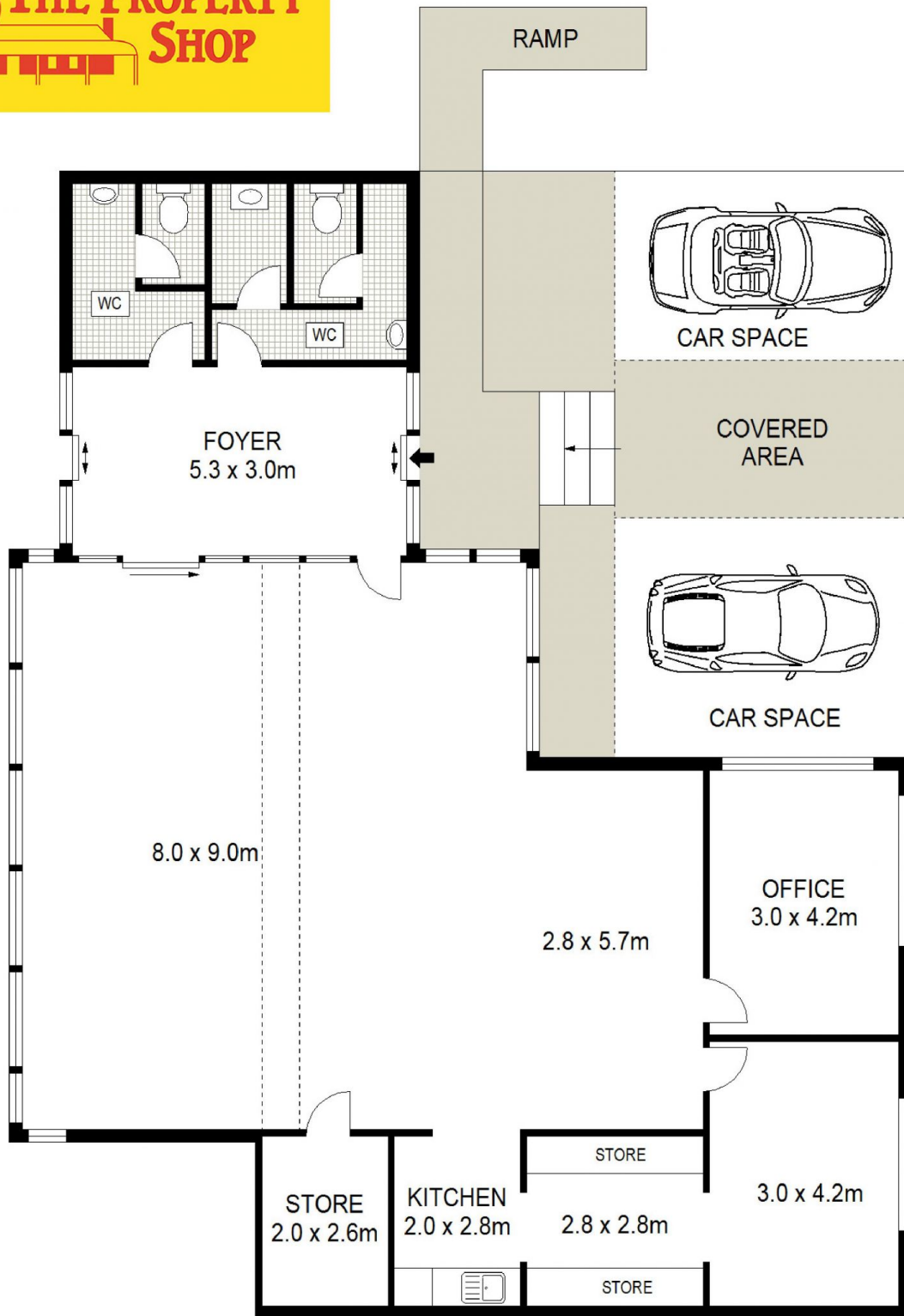
13 Perry Street Mudgee NSW

- 1,289m2 (approx.) site
- 165m2 (approx.) of existing office space with private parking
- Dual street frontage and rear lane access
- Development Potential (STCA)

Price : \$ 680,000
Building Size : 165 sqm
Land Size : 1289 sqm
View : <https://www.thepropertyshop.com.au/sale/nsw/dubbo-orana/mudgee/commercial/offices/5659279>



Andrew Palmer
02 6372 2222



GROUND LEVEL

13 PERRY STREET

MUDGEES

