



### 82a Mortimer Street Mudgee NSW

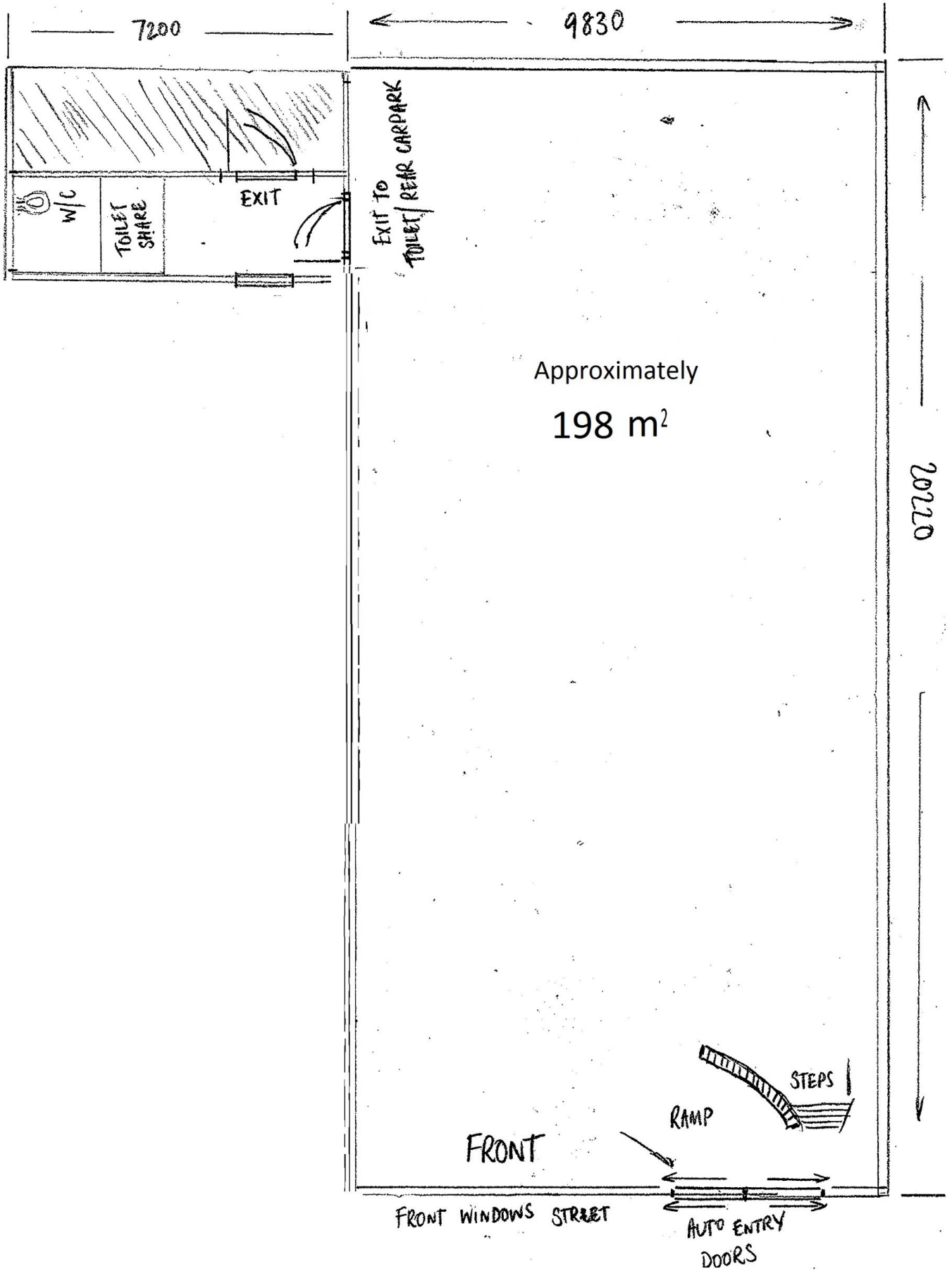


Whatever your business this prime CBD location guarantees everyone will know you are there. 200m2 in excellent location between Woolworths and The Gateway. Heavy pedestrian traffic flow and excellent window display. Rear access, shared facilities and off street parking.

**Building Size** : 197 sqm  
**View** : <https://www.thepropertyshop.com.au/lease/nsw/dubbo-orana/mudgee/commercial/showroomsbulky-goods/5659247>



**June Lewis**  
**02 6372 2222**



82/82A MORTIMER STREET, MUDGEE