



### 17 Church Street Mudgee NSW

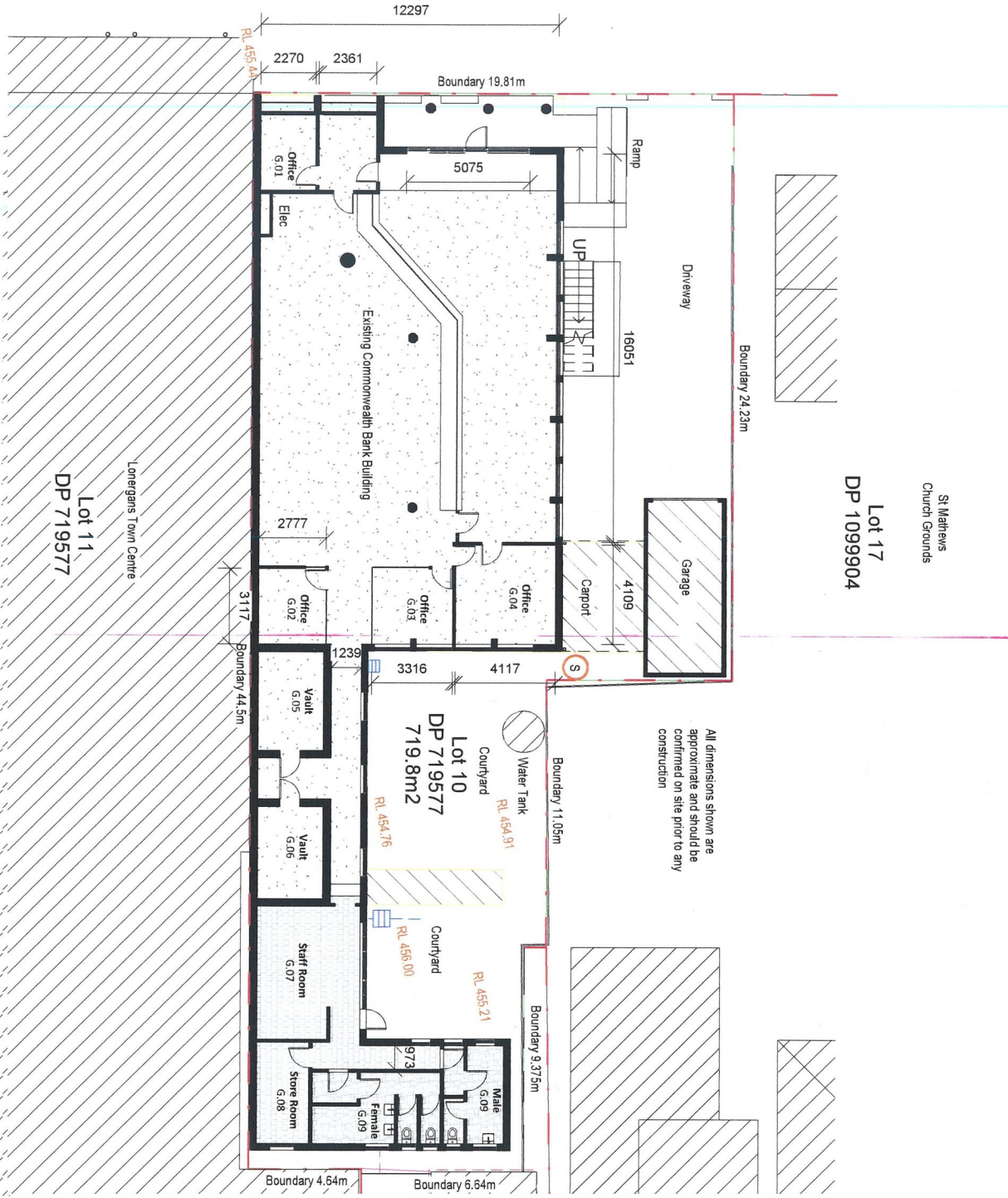
- An opportunity not to be missed.
- First time available for over 100 years.
- Very prominent building with signage and parking
- CBA relocated next door
- New shopfront window proposed
- Can be subdivided smaller or expanded to suit
- 12.5 metre building frontage
- 370m2 ground floor with amenities.
- Opposite main pedestrian crossing between Coles & Woolworths
- Ideal premises for retail or commercial use

**Building Size** : 350 sqm  
**View** : <https://www.thepropertyshop.com.au/lease/nsw/dubbo-orana/mudgee/commercial/retail/5659186>



**June Lewis**  
**02 6372 2222**

# Church Street



All dimensions shown are approximate and should be confirmed on site prior to any construction

St Matthews Church Grounds  
 Lot 17  
 DP 1099904

# Church Street

