



## 73 Lewis Street Mudgee NSW

4 2 1

'Spenfield Manor' a grand 'Arts and Craft' Edwardian home designed by Mudgee's renowned architect Harold Hardwick as his own residence.

Constructed circa 1910, and located just a few blocks from the town centre, Spenfield Manor has been lovingly restored and extended to accommodate a modern contemporary lifestyle.

- Full of period features such as the original 'Spenfield' front door, distinctive terracotta tiles in gable ends, ornate leadlight windows, fireplaces and stunning 'Wunderlich' pressed metal ceilings
- A flexible floorplan, currently furnished as 3 bedrooms with a large dining room, formerly the fourth bedroom, plus a separate office
- The upstairs master suite with walk-in robes, full en-suite and private balcony
- Stunning north facing formal lounge with fireplace and soaring 'Wunderlich' ceiling
- A large well appointed kitchen is open to a spacious informal living and dining room, perfect for modern day living
- Outside the established garden features relaxed

**Land Size** : 1038 sqm

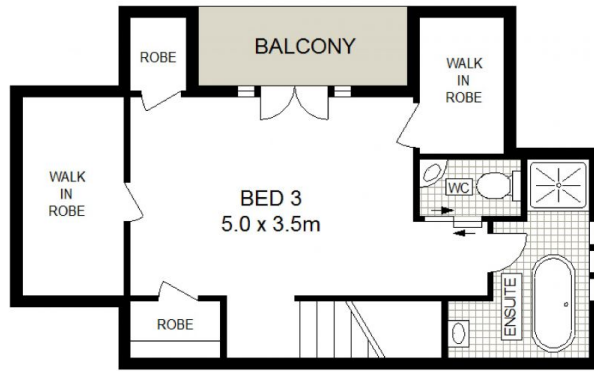
**View** : <https://www.thepropertyshop.com.au/sale/nsw/dubbo-orana/mudgee/residential/house/5659100>



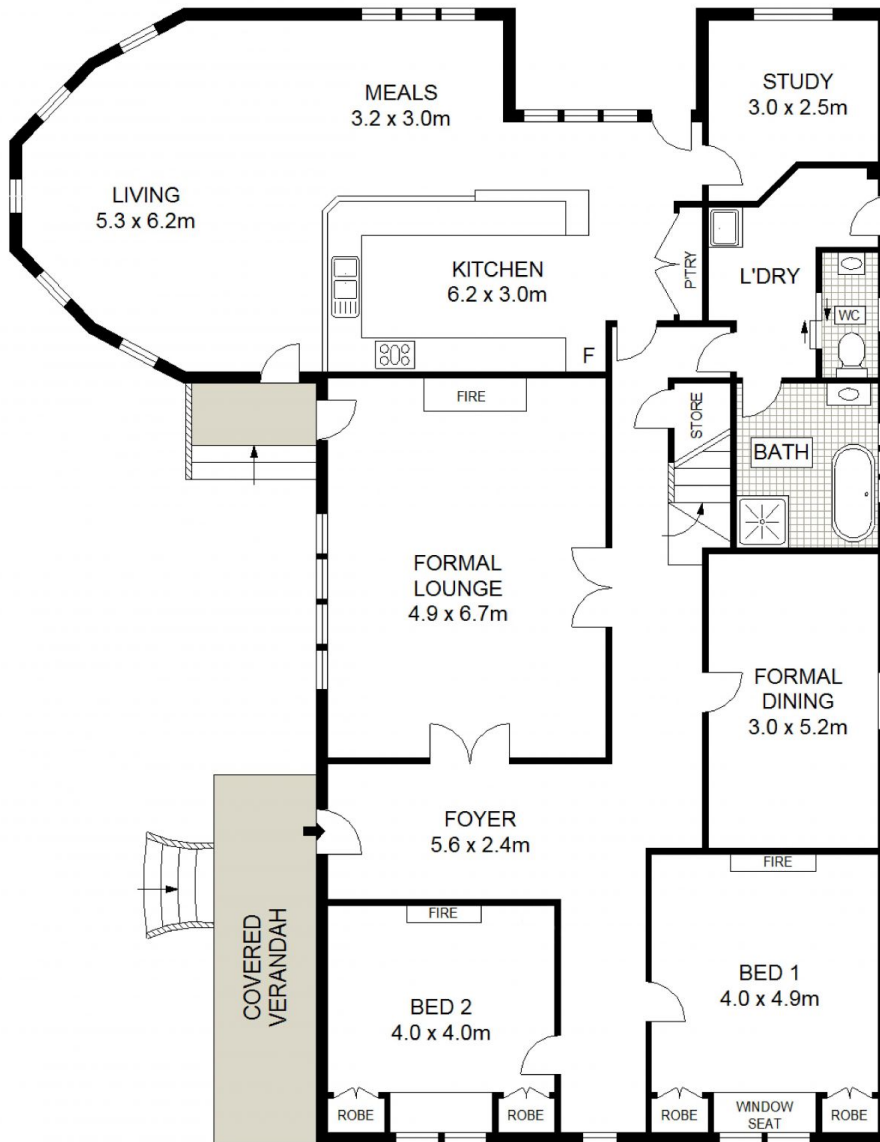
**Andrew Palmer**  
02 6372 2222



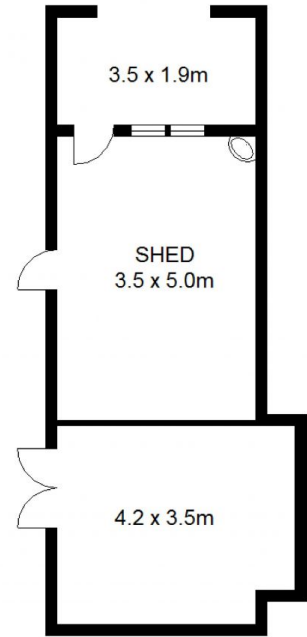
**Sara Perry**  
02 6372 2222



UPPER LEVEL



GROUND LEVEL



GROUND LEVEL



73 LEWIS STREET

MUDGE



Floor plans and rooms sizes are indicative only