



### 3/50 Sydney Road Mudgee NSW

Featuring reception/retail area and 2 separate warehouse spaces and a small mezzanine. Easy access from Sydney Road (adjacent to Busy Bee Service Station) This industrial unit has separate reception, storage and workshop areas.  
168m<sup>2</sup>

**Building Size** : 168 sqm  
**Land Size** : 168 sqm  
**View** : <https://www.thepropertyshop.com.au/lease/nsw/dubbo-orana/mudgee/commercial/industrial/5658948>

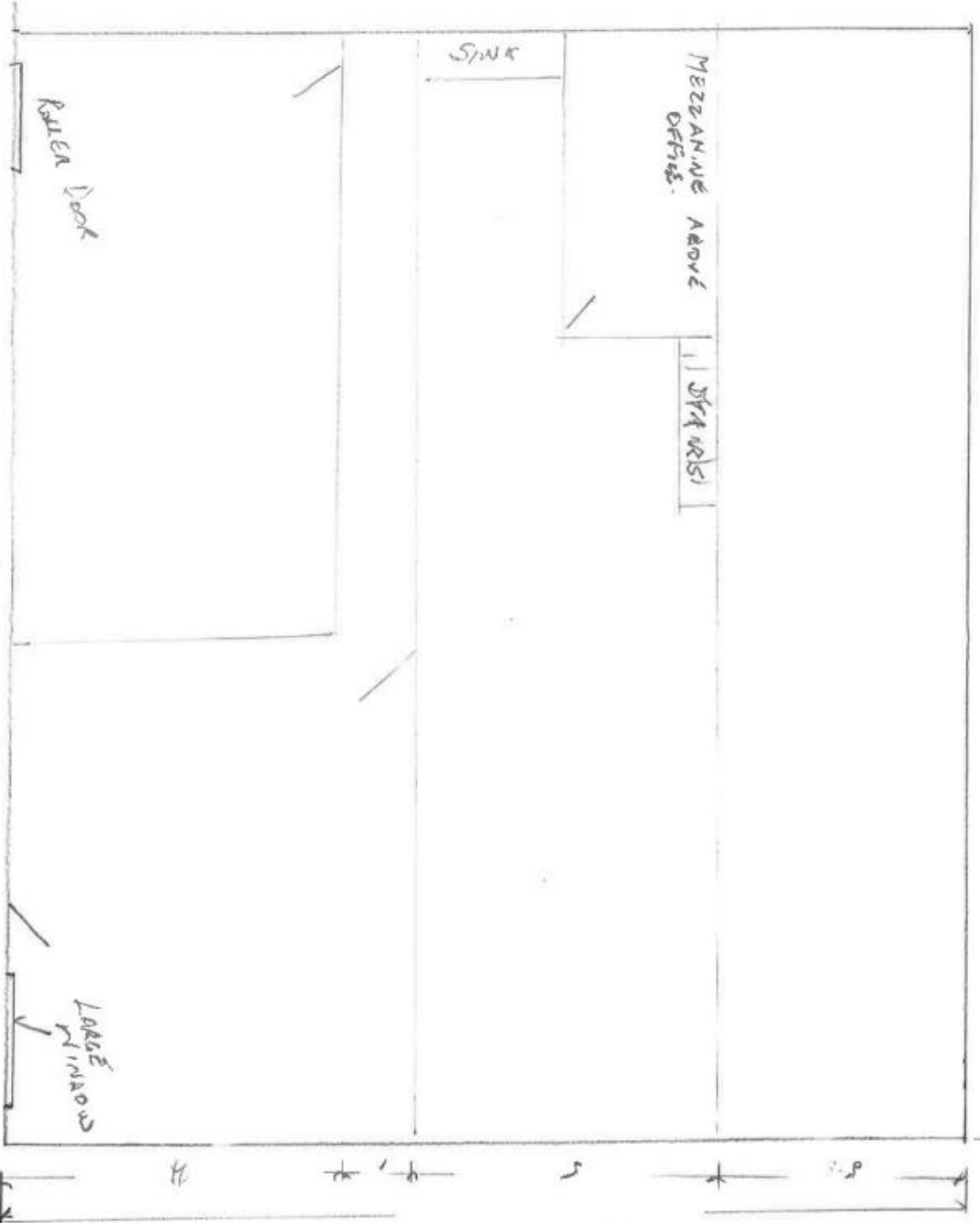


**June Lewis**  
02 6372 2222

CASTLEBACH Hwy & Sydney Rd.



12m



← ACCESS LAWE → #3 / 50 SYDNEY RD.

14m