



26 Church Street Mudgee NSW

1 

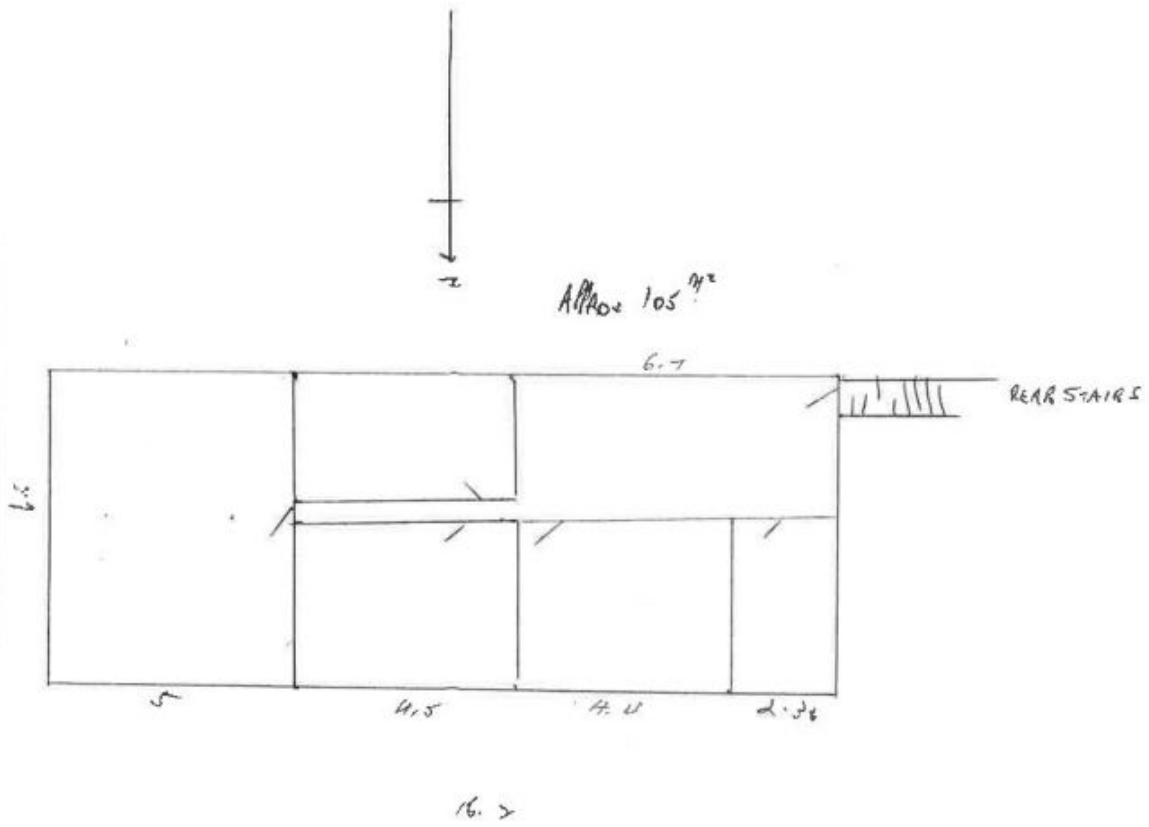
Located in the heart of the Mudgee CBD this shop fronts busy Church Street with high pedestrian traffic flow. Excellent window display. Approximately 160m² of retail space with amenities and rear access. One car space at the rear of the premises. Don't miss this opportunity

Building Size : 160 sqm
View : <https://www.thepropertyshop.com.au/lease/nsw/dubbo-orana/mudgee/commercial/retail/5658794>



June Lewis
 02 6372 2222

CHURCH ST - 1st Floor



CHURCH ST

