

23 Perry Street Mudgee NSW

6 

LARGE COMMERCIAL/RETAIL SPACE WITH SEPARATE OFFICES AND AMENITIES. ALL AREAS HAVE SEPARATE ACCESS. CLOSE TO THE CBD WITH ONSITE PARKING AND STORAGE.

APPROX 490m²

CALL JUNE LEWIS FOR INSPECTION 0412 501 174

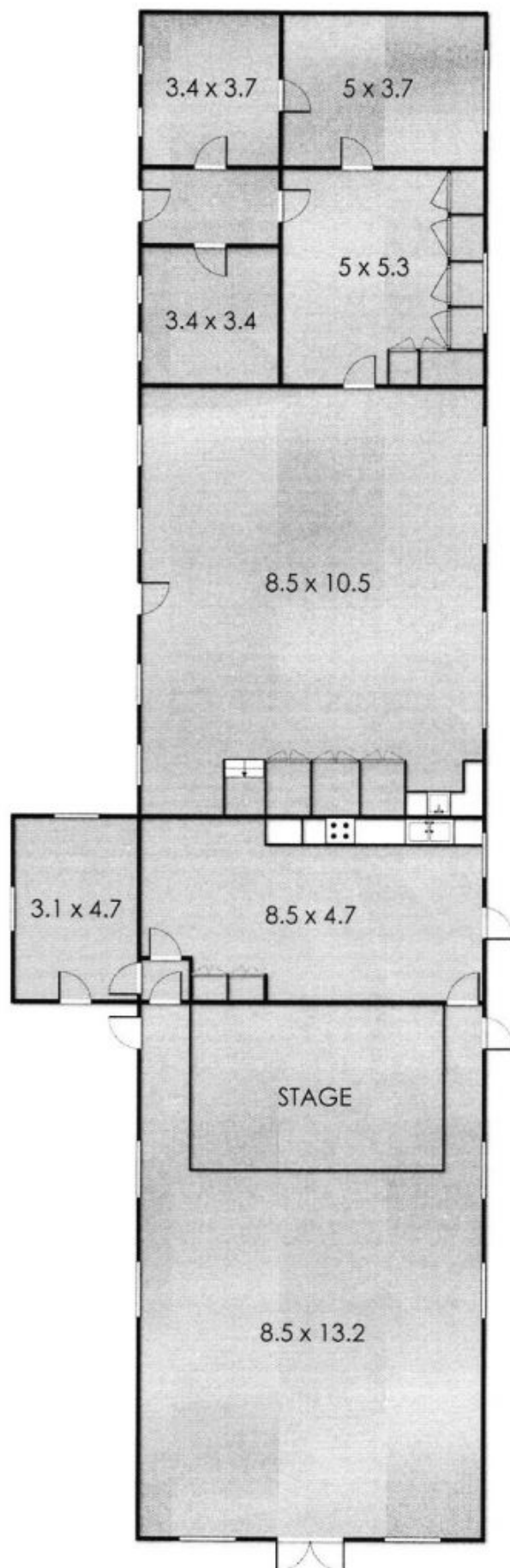
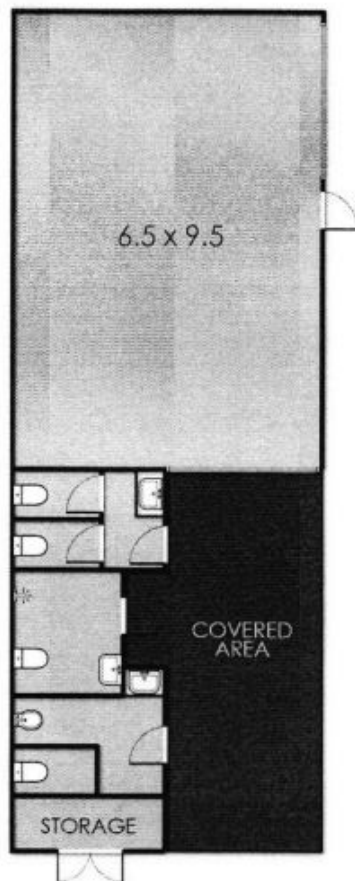
Building Size : 490 sqm

View : <https://www.thepropertyshop.com.au/lease/nsw/dubbo-orana/mudgee/commercial/offices/5658356>



June Lewis
02 6372 2222

SALVATION ARMY HALL, PERRY STREET MUDGEES



This floor plan is not to scale.
Areas and dimensions are approximate
and therefore plan should only be
used for illustrative purposes.
© Erin Latimore Photography